

OSSIX[®] Volumax

Volumizing, Ossifying Collagen Scaffold

For Guided Bone Regeneration (GBR) & Guided Tissue Regeneration (GTR) Procedures

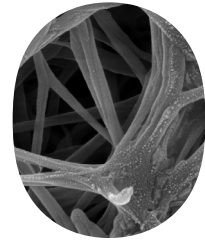
Powered by Clinically Proven GLYMATRIX[®] Technology

datumdental

OSSIX® Volumax - Volumizing, Ossifying Col

Powered by GLYMATRIX® Technology

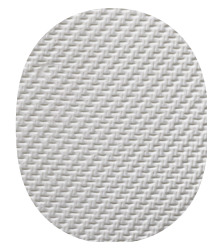
GLYMATRIX is a proprietary collagen cross-linking technology, similar to the naturally occurring glycation process in the human body. The technology uses sugars to cross-link collagen molecules producing a bioprogrammable collagen matrix, which can be tailored to deliver products of varying physical properties and customized longevity. GLYMATRIX powers the OSSIX family of regenerative solutions.



OSSIX Volumax Features & Benefits

OSSIX Volumax is a volumizing, multi-layer collagen scaffold:

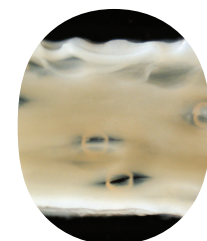
- Thick and expands when wet
- Excellent handling, easy to use, adapts and adheres to the bone
- Undergoes ossification (starts after one month)*
- Safe and effective
- Can be used without bone graft (in some indications) to provide ~ 2 mm volume
- Positive effect on soft tissue quality
- May be folded/placed as double layer for extra volume (up to 4 mm)



Look for this signature herringbone pattern on both sides of the device

OSSIX Volumax Can Be Used

- To correct buccal bone loss in 2nd stage implant surgery
- To correct dehiscence type defects around implants
- For extra volume in lateral and vertical bone augmentation procedures
- In socket preservation following any extraction procedure
- In one-stage implant procedures to ensure sufficient bone
- To augment soft tissue in implants, pontic sites, masking of implants etc. (replacing connective tissue grafts)



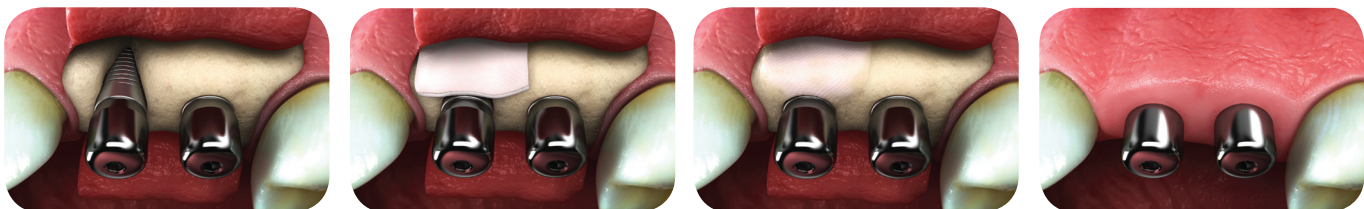
Powered by GLYMATRIX technology, OSSIX Volumax scaffold is a unique multi-layered collagen barrier

Be Prepared for the Unforeseen - One Product, Real Volume

You may encounter buccal dehiscence defects in either 1st or 2nd stage implant procedures.

OSSIX Volumax is suitable for all stages.

In cases where extra volume is required, OSSIX Volumax can be folded or placed as a double layer; no bone graft needed.

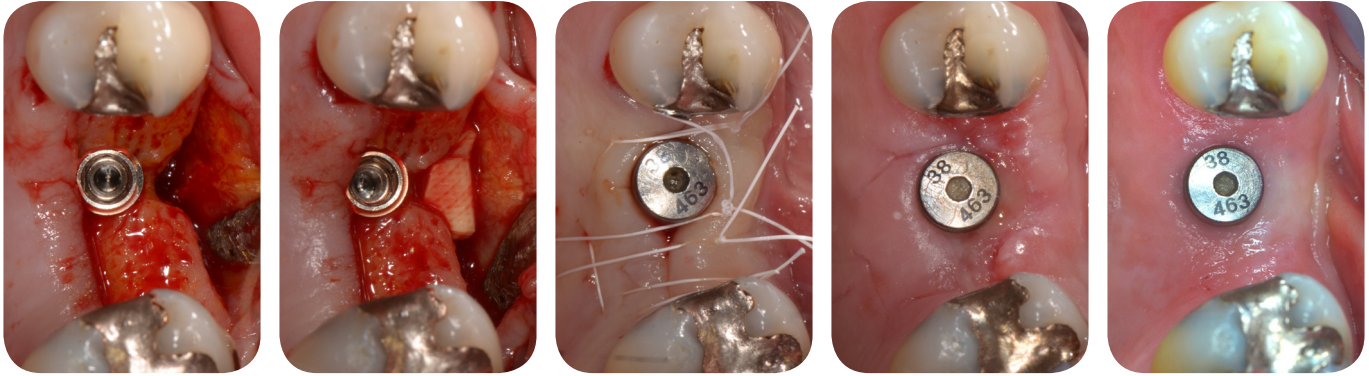


* Alveolar Ridge Augmentation and Ossification of Thick vs. Thin Sugar Cross-linked Collagen Membranes in a Canine L-shape Defect Model, Zubery et al, AAP Research Forum Poster Session, 2016

Please read IFU before use and for additional info on indications, contraindications, warnings and precautions.

Collagen Scaffold for GBR & GTR Procedures

Using OSSIX Volumax Collagen Scaffold



2nd stage - OSSIX Volumax placed folded on buccal concavity

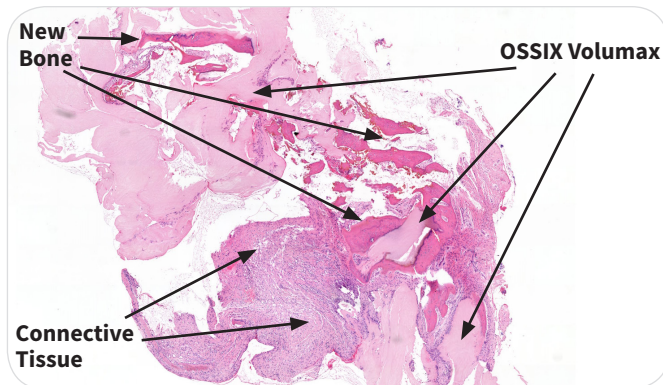
Tension-free suturing

2 weeks healing

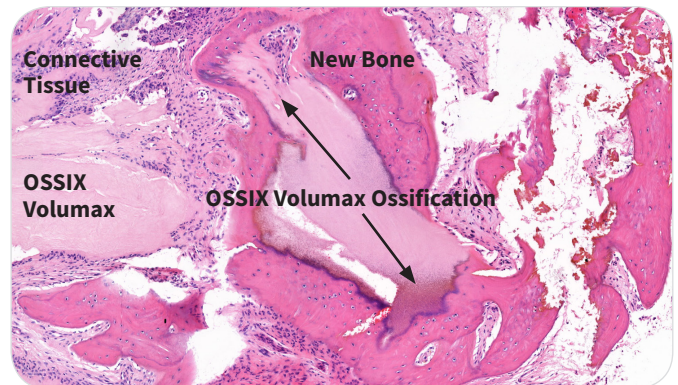
8 months - significant volume augmentation and thick keratinized tissue

Courtesy: Dr. Roberto Abundo, DDS, Torino, Italy

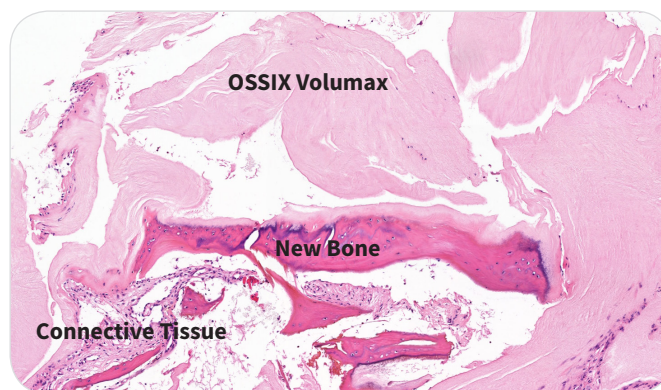
Human Histology of OSSIX Volumax at 5 Months – Ossification & Improved Bone Growth



New bone formation with OSSIX Volumax after 5 months



Ossification occurs both around and within OSSIX Volumax



Detailed analysis of the region demonstrates presence of newly formed bone tissue that appears to directly ossify the OSSIX Volumax collagen scaffold

Courtesy: Dr. Yuval Zubery, DMD, Ramat Hasharon, Israel

OSSIX® Volumax

Volumizing, Ossifying Collagen Scaffold

For Guided Bone Regeneration (GBR) & Guided Tissue Regeneration (GTR) Procedures

Ordering Information

OSSIX Volumax is currently available in the USA, Europe, Argentina, Canada, Chile, Colombia, Dominican Republic, Hong Kong, Israel, Korea, Mexico, and Singapore.

OSSIX Volumax is available in 4 sizes:

Description & Size	Reference No.	Catalog No.
OSSIX Volumax 10x12.5 mm	OXV1012	100100
OSSIX Volumax 15x25 mm	OXV1525	100200
OSSIX Volumax 25x30 mm	OXV2530	100300
OSSIX Volumax 10x40 mm	OXV1040	100400



Winner DrBicuspid Dental Excellence Award Best New Restorative Material (2017), selected by readers & expert panel

Datum Dental at a Glance

Datum Dental Ltd., a subsidiary of Datum Biotech, provides innovative dental regeneration products, aiming to support and enhance the future of implantology and oral care. Its patented GLYMATRIX® core technology, a sugar cross-linking collagen biomaterial, is clinically proven in over 100 scientific publications with extensive clinical experience spanning two decades. Powered by GLYMATRIX, the OSSIX product family has enabled clinicians in hundreds of thousands of procedures worldwide to safely provide predictable, long-term results to their patients. Datum Dental continues to develop new products for GBR and GTR that simplify procedures and overcome major deficiencies in existing biomaterials through safe and transformational solutions.

Global Partners

USA:

Dentsply Sirona Implants, MIS Implants Technologies Inc., Orapharma, Inc., Sweden & Martina Inc.


Outside of USA:

Andes HSG, Bicon Singapore, Conectores Osteomaxilofaciales, H&A Systems Ltd., Hesira Med Inc., Med-Tech Esthetics LLC, Memodent B.V., MIS Implants (Belgium, Columbia, Romania, South Africa), P. Sideris & Co. E.E. - PS Team, Purgo, REGEDENT, Salugraft Dental, Sweden & Martina SpA, Syncrotech, VitalTech.

Everything we do is designed to give nature its best chance

datumdental

For more information on OSSIX regenerative products and activities in your region:

www.ossixdental.com     

© 2018 Datum Dental, Ltd. All rights reserved. The Datum Dental logo, GLYMATRIX and OSSIX are trademarks and/or registered trademarks of trademarks of Datum Dental Ltd, Datum Biotech Ltd, their subsidiaries, and/or affiliates in the United States and/or other countries. All other company or product names are the trademarks or registered trademarks of their respective holders.